

Group Meeting update: Fixed Target Analysis

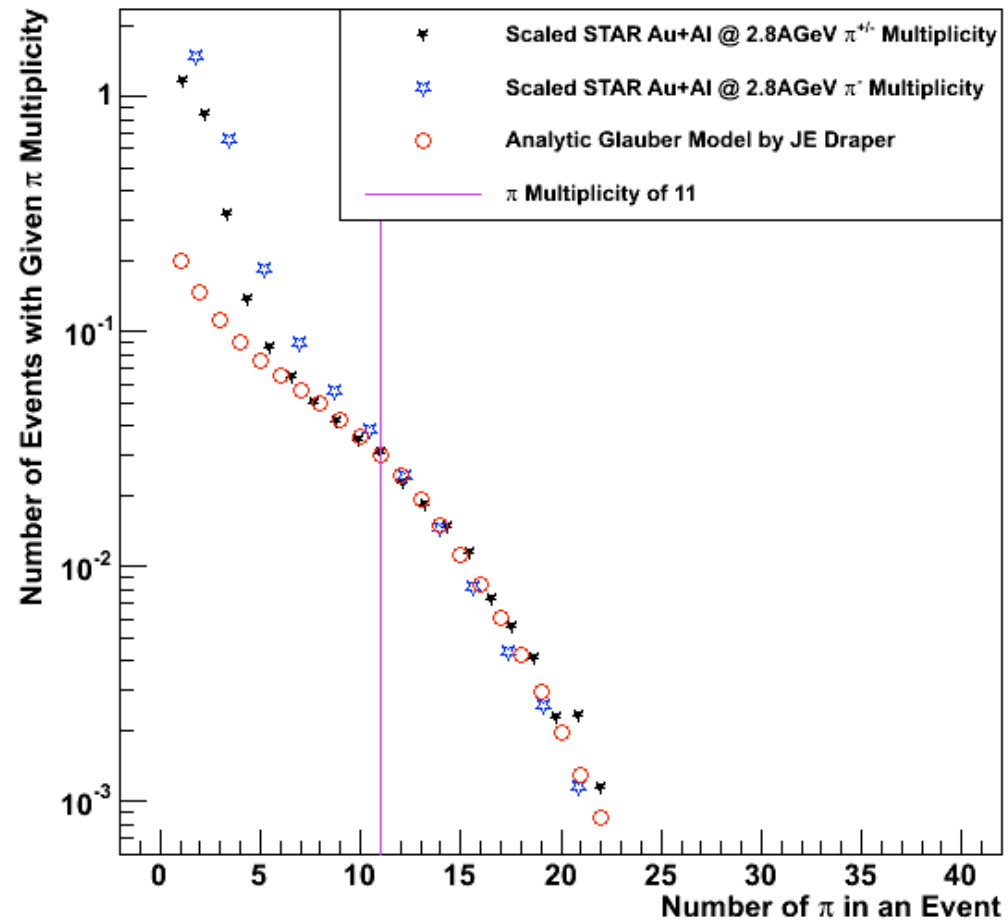
Brooke Haag

6.27.12

5 GeV test run update

- Need to run offline data analysis. Not looking good ... yet?

Main Goal Underway: Defining a centrality bin



Standard Beam Pipe Event Cuts

- $n_{\text{PrimaryTracks}} > 2$ (start with a vertex that has at least 2 primary tracks ...)
- $2 \text{ cm} < r_{\text{Vertex}} < 5 \text{ cm}$ (vertex reconstructed outside the radius of the beam pipe)
- $150 \text{ cm} < |z_{\text{Vertex}}| < 200 \text{ cm}$ (select interactions with AI beam pipe)
- TPC Direction: $p_z * z < 0$ (select an event on the edge of the TPC traveling toward the center)

Latest Run Over 4.5 Au+Al Data without “refMult” cut :

- 175 jobs; 128 finished

- of those that failed, the last event looked like:

```
----- Processing Event : 414300 -----  
StMuDstMaker:INFO - *** StMuDstMaker::Make() == StOK(0)  
***St_db_Maker:INFO - *** St_db_Maker::Make() == StOK(0) ***  
evicting 21721 ? 05:24:15 root4star  
StMuDstBeampipeAnalysisMaker::Make() starting...  
Num. of primary tracks: 388
```

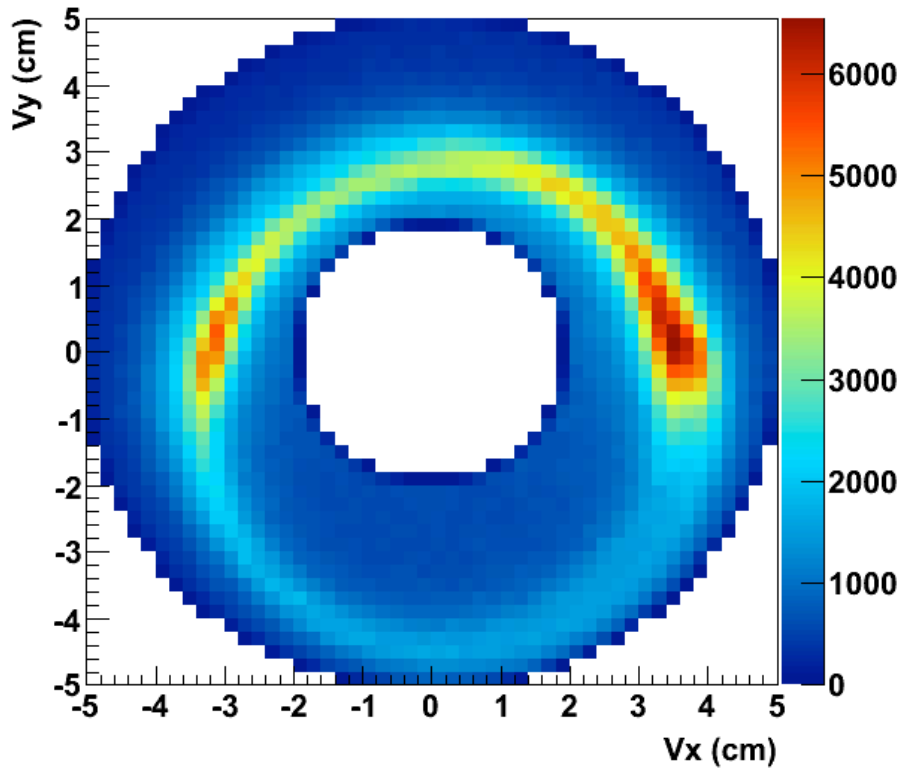
- Another issue: some AuAu200 files were used in 2 jobs (not included in final analysis):

```
//xrdstar.rcf.bnl.gov:1095//home/starlib/home/starreco/reco/  
AuAu200_production_2011/FullField/P11id/2011/163/12163024/  
st_physics_12163024_raw_1010001.MuDst.root 8527
```

- ~ 3M beam pipe events in 4.5 Au+Al dataset

QA plots

based on extrapolation from finished jobs, there are ~3 M Au+Al events



xy Vertex position after cuts

